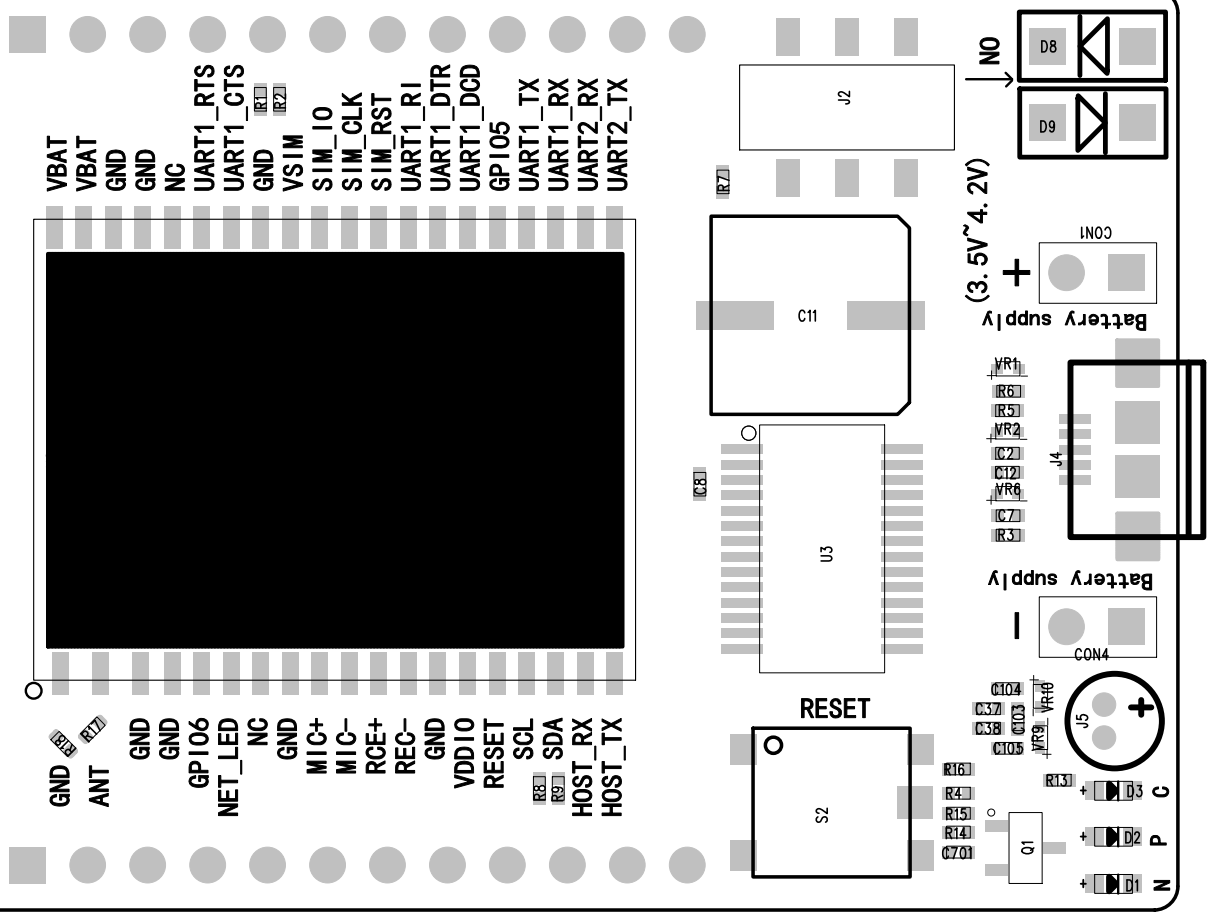


EVB_S1_Air200_A10

T1



- | | |
|---------|-----------|
| GND | VBAT |
| ANT | VBAT |
| GND | GND |
| GND | GND |
| GP106 | NC |
| NET_LED | UART1_RTS |
| NC | UART1_CTS |
| GND | GND |
| GND | VSIM |
| MIC+ | SIM_IO |
| MIC- | SIM_CLK |
| RCE+ | SIM_RST |
| REC- | UART1_RI |
| GND | UART1_DTR |
| VDD10 | UART1_DCD |
| RESET | GPIO5 |
| SCL | UART1_TX |
| SDA | UART1_RX |
| HOST_RX | UART2_RX |
| HOST_TX | UART2_TX |